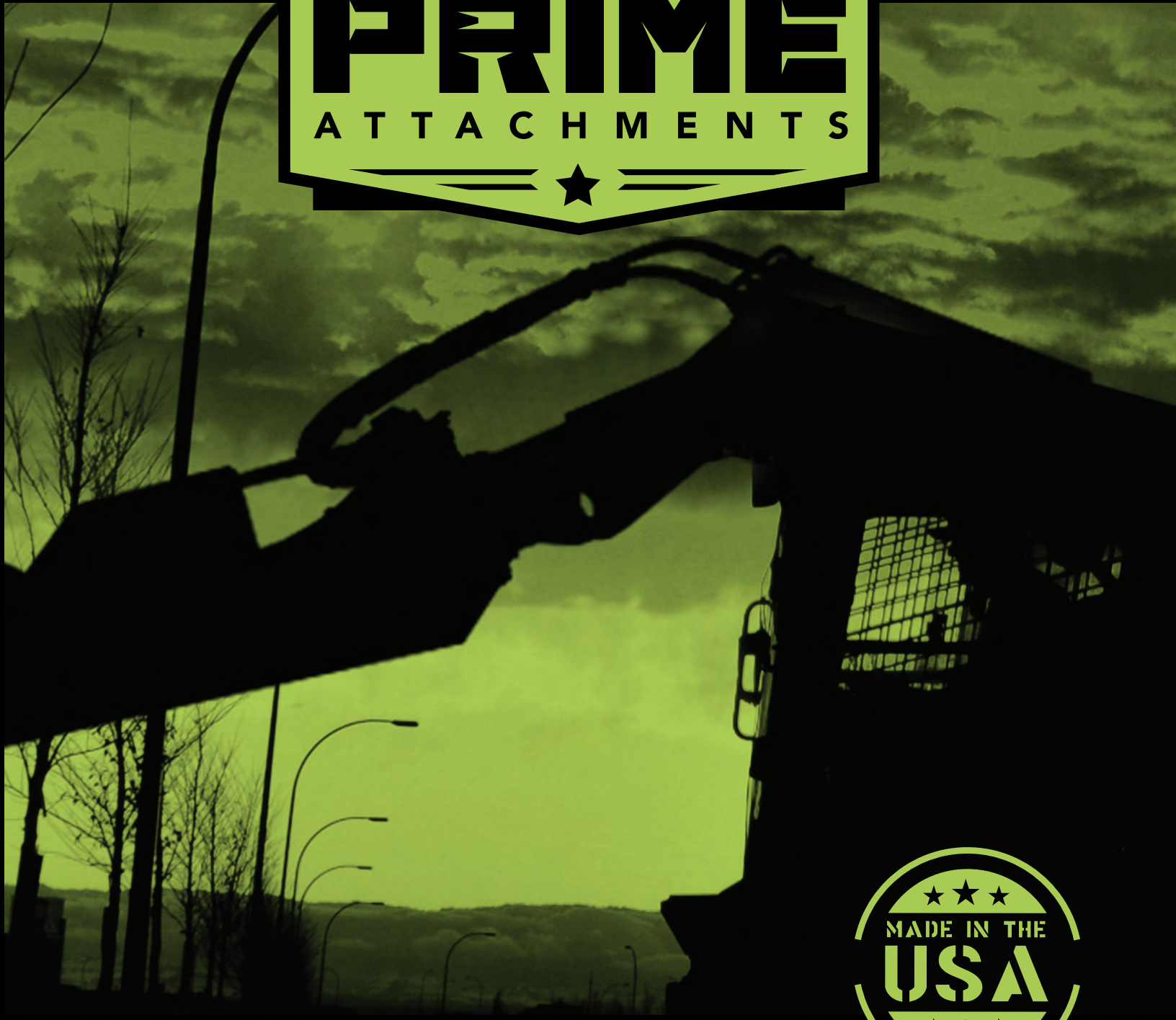


PRODUCT CATALOG



BUILT TO BE BADASS



Rock + Brush Grapple

68"	74"	78"	84"
\$3,000	\$3,050	\$3,100	\$3,150

- 3/8" tines, 3" spacing
- Bolt-on removable side plates
- Reinforced outside tines
- Grapple stops
- All grade 50 steel



Brush Mower

60"	72"	80"
\$4,800	\$5,000	\$5,200

- Rated for trees and saplings up to 3" in diameter
- Full-length 3/8" runners
- Standard hydraulic flow (15-25 gallons per minute)
- 2 free-spinning blades



Direct Drive

72"	80"
\$6,400	\$6,800

- Rated for trees up to 8" diameter trees
- Massive 417 lb round flywheel
- 4 free-spinning blades
- Standard hydraulic flow (19-25 gallons per minute)
- All grade 50 steel



Tree Puller w/ Push Bar

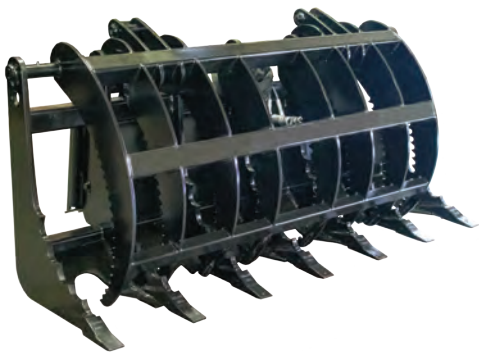
\$1,800

- Cylinder cover
- Remove trees up to 12" in diameter
- Jaws opening 17"
- 4 full-length gussets
- Perfect for T-posts or fence posts



(877) 757-5919 | PrimeAttach.com





Clam Grapple

66"

\$3,800

74"

\$4,000

86"

\$4,300

- 3/4" tines with replaceable digging teeth
- Massive 51" opening
- Grapple stops
- Single grapple
- All grade 50 steel



Dual Clam Grapple

66"

\$3,800

74"

\$4,000

86"

\$4,300

- 3/4" tines with replaceable digging teeth
- Massive 51" opening
- Grapple stops
- Independent grapples
- All grade 50 steel



Root Grapple

68"

\$2,900

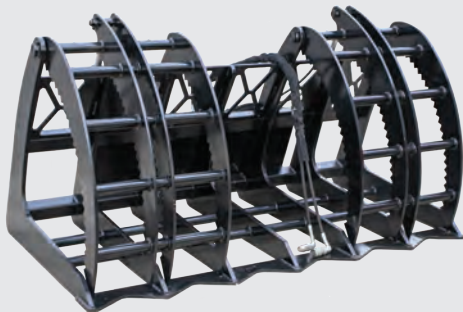
76"

\$3,000

83"

\$3,100

- 1/2" Grade 50 tines with 6" spacing
- Independent grapples
- Visibility cutouts
- Grapple stops
- All grade 50 steel



Forestry Grapple

76"

\$4,000

84"

\$4,300

- Independent grapples
- Massive 52 1/2" grapple opening
- 3/4" hardened tines with 12" tine spacing
- All grade 50 steel



Rock + Stump Ripper

\$1,600

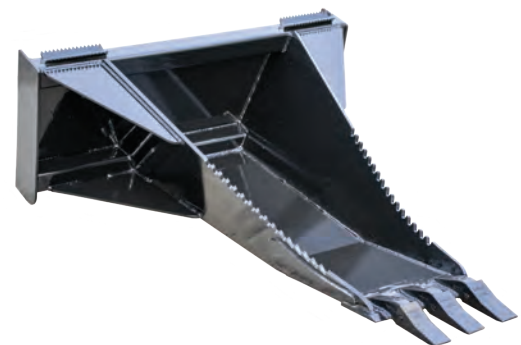
- 1" Grade 50 tines (triple gusset design)
- Recessed middle tine



Rock + Stump Ripper Grapple

\$2,300

- 1" Grade 50 tines (triple gusset design)
- 1/2" cutting edge gusset support for root extraction
- Grapple stops



Stump Bucket

\$1,350

- Replaceable digging/excavator performance teeth
- Massive 63" length for longer digs
- 2 full-length wear strips on the bottom of bucket
- All grade 50 steel



Stump Bucket + Grapple

\$1,900

- Grapple stops
- Massive 53" grapple opening
- Replaceable digging/excavator performance teeth
- 2 full-length wear strips on the bottom of bucket
- All grade 50 steel



(877) 757-5919 | PrimeAttach.com





Auger

Drive

\$2,200

- Self-centering frame
- 2" hex drive unit
- Heavy duty commercial frame
- Greasable pivot points



Tiller

72"

\$4,000

84"

\$4,200

- Four swing-away blades per spindle
- Bi-directional motor / Bi-directional tine rotation
- Standard hydraulic flow (15-25 gallons per minute)
- Adjustable 6" tilling depth



Backhoe

6-1/2'

w/ 12" bucket

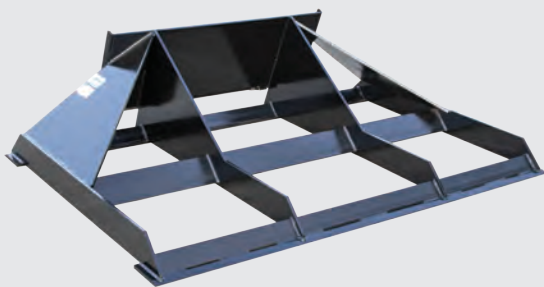
\$2,600

8-1/2'

w/ 12" bucket

\$2,900

- 12", 18" & 24" wide bucket options w/ replaceable digging teeth
- 1" Grade 50 steel gussets
- Mechanical thumb option available
- Recessed cylinder protection



Land Leveler

72"

\$1,575

78"

\$1,625

84"

\$1,700

- Use for back dragging, grading, or sod peeling
- Level and grade landscape
- Multi-directional tool with cutting edge on front + back





4-in-1 Bucket

72"

\$3,900

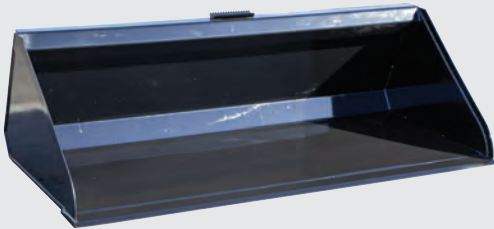
78"

\$4,150

84"

\$4,350

- Reinforced bucket and sides
- 3/4" bolt-on reversible cutting edge
- Optional bolt-on reversible bucket cutting edge



Low-Profile Dirt Bucket

68"

\$1,200

74"

\$1,250

78"

\$1,300

84"

\$1,350

- 3/16" or 1/4" bucket material available
- 1/2" fully welded on cutting edge
- 22" high + 32" deep
- Optional bolt-on reversible cutting edge



Tooth Bucket

68"

\$1,850

72"

\$1,900

78"

\$1,950

84"

\$2,000

- 1/4" bucket material
- 1/2" fully welded on cutting edge
- Replaceable digging teeth



Rock Bucket

68"

\$1,350

74"

\$1,400

78"

\$1,450

84"

\$1,500

- 3/8" tines, 3" spacing
- Reversible outside tines
- Bolt-on removable side plates
- 1/2" serrated cutting edge
- All grade 50 steel



(877) 757-5919 | PrimeAttach.com





Dirt Bucket Grapple

68"	72"	78"	84"
\$2,850	\$2,950	\$3,050	\$3,150

- 1/4" bucket material
- 1/2" fully welded cutting edge
- Bolt-on side plates
- independent grapples
- Optional bolt-on cutting edge



Cyclops Solo Grapple

48"	54"
\$2,050	\$2,100

- Bolt-on removable side plates
- 3/8" tines, 50 tines, 3" spacing
- Greasable pivot points
- 1/2" serrated cutting edge
- All grade 50 steel

WE FINANCE

Prime Attachments has partnered with Synchrony Bank to provide your business with industry-leading construction equipment for a low monthly payment. Financing is quick and easy, getting you the equipment you need at an affordable monthly payment.

Get an instant approval today with no hard credit pull and no documents needed.



Every purchase comes with a two-year manufacturer warranty





Snow Blower

72"	78"	84"
\$8,600	\$8,780	\$8,960

- 2-stage blower
- Angled paddles
- 1/2" bolt-on reversible cutting edge
- All hydraulic-driven motors



Snow Bucket

7'	8'	9'	10'
\$1,900	\$2,000	\$2,150	\$2,300

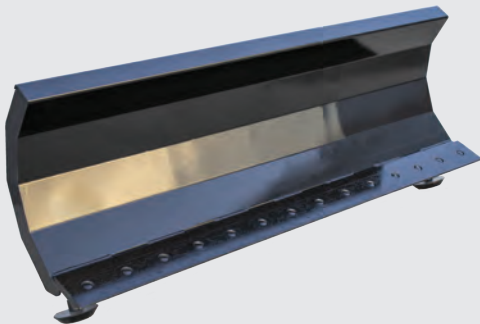
- 36" high and 42" deep
- 3/4" bolt-on reversible cutting edge
- High volume bucket capacity
- Visibility cutouts



Snow Pusher

7'	8'	10'
\$1,900	\$2,100	\$2,300

- 1/2" adjustable + reversible steel cutting edge
- 1" Grade 50 shoes
- Optional back drag



Snow Blade

6'	7'	8a'
\$3,000	\$3,100	\$3,250

- 3/4" bolt-on reversible cutting edge
- 30 degree angle hydraulic pivot
- Easily adjustable skid shoe for depth control



(877) 757-5919 | PrimeAttach.com





Power Sweeper

6'	7'
\$5,500	\$5,700

- 32" stainless or poly bristles
- Standard flow up to 15-25 gpm
- Hydraulic angle



Low Profile Snow Pro

7'	8'
\$2,150	\$2,300

- Height 26" + depth 52"
- 3/4" x 6" bolt-on reversible cutting edge
- Internal gusset for support



High Capacity Grapple

7'	8'
\$3,200	\$3,500

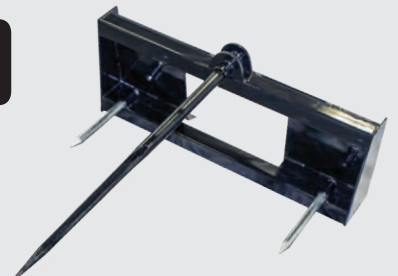
- 73" grapple opening
- 5/16" thick steel side plates
- 3/4" bolt-on reversible cutting edge
- Additional teeth available



2 Prong Bale Spear

- Used for square and round bales
- 2-39" spears

\$900



3 Prong Bale Spear

- 2-17" stabilizer spears
- 1-49" spear
- Specialized for round bales





Pallet Forks

4'x4'

\$1,100

5'x4'

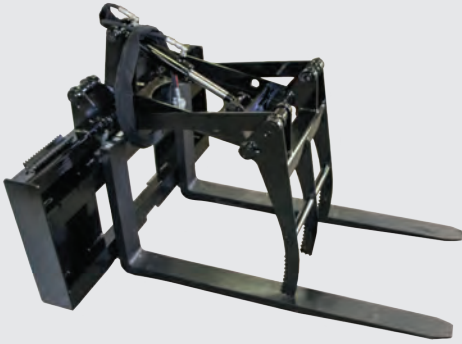
4'x5'

\$1,200

5'x5'

\$1,300

- Professionally milled 1 1/4" x 3" slider bars
- 5,500 lb rated forks
- Walk-through carriage



Pallet Fork Grapple

\$2,000

- All pivot points are greasable
- Universal quick attach plates
- 5,500 lb rated forks



Hydraulic Sliding Pallet Forks

4'x4'

\$2,000

5'x4'

4'x5'

\$2,150

5'x5'

\$2,300

- Hydraulic adjustable forks
- 5,500 lb rated forks
- Walk-through carriage
- Smooth 1 1/4 x 3" slider bar



Log Splitter

Single Wedge

\$3,400

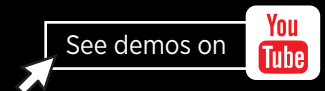
4-Way

\$3,500

Features: 5/8" I Beam
5"x30" Cylinder 30 Ton



(877) 757-5919 | PrimeAttach.com





Concrete Hopper

\$1,950

- 1/2 yard capacity
- 36" removable material chute
- Hydraulic gate



Telescopic Boom

\$2,900

- Operating weight: 485 lbs
- Length fully extended: 22.73 ft
- Rated fully extended: 350 lbs



Receiver Hitch

\$300

- Quick attach plate thickness
- 2" receiver tube, 12" long



Quick Attach Plate

\$170

- 1/4" or 5/16" thick plate
- Solid or open available



(877) 757-5919 | PrimeAttach.com



TO ORDER: Call **877-757-5919**
or visit
PrimeAttach.com



4243 County Rd 40 NW
Garfield, MN 56332

